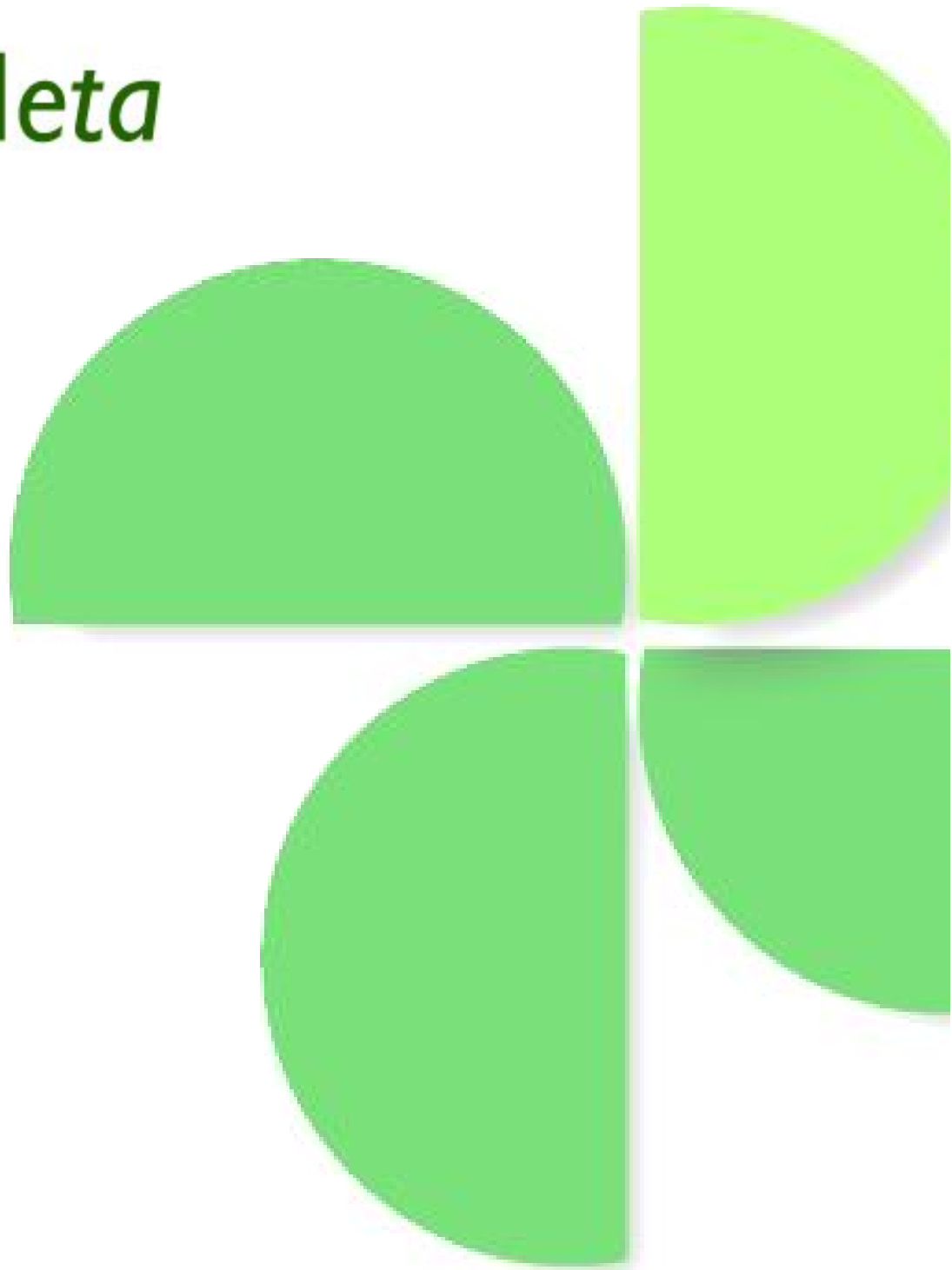




**Version 1.3.0**

User Guide



## Table of Contents

Introduction.....	3
Modules Supported.....	3
Features.....	3
Installation.....	4
Uninstalling.....	5
Setup.....	6
Creating a Meta Connection.....	6
Product.....	7
Connection Name.....	7
Allowed Roles.....	7
Allowed Users.....	7
Object Path.....	8
Header and Footer.....	8
When sending a Post to editor.....	10
When receiving a split post.....	10
Options.....	12
Setting up Windows Live Writer.....	13
Support.....	16
End User License Agreement.....	17

## Introduction

---

**digMeta** is a DotNetNuke module that allows you to use **Window LiveWriter** to create and edit content in your DotNetNuke Portals. digMeta opens up a MetaWeblog API to your DotNetNuke modules. Typically the MetaWeblog API is used to publish Blogs, but digMeta let you do much more!

## Modules Supported

---

- DotNetNuke Blog
- DotNetNuke Text/HTML
- Ventrian News Articles

For up-to-date versions, please visit [dignuke.com](http://dignuke.com)

## Features

---

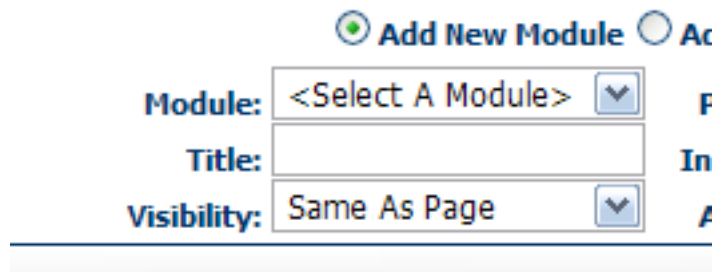
- MetaWeblog API Framework for DotNetNuke
- Supports [Windows Live Writer](#)
- Role AND User level security
- Use your existing DNN login and password
- Plugin Framework so you can use the MetaWeblog with your own modules.

## Installation

---

1. Login as host to your DotNetNuke portal.
2. Go to Host > Module Definitions
3. From the Module menu, select **Upload New Module**
4. Browse and upload the .zip file you received.

After the install, the module will be available in the Modules drop down in the control panel at the top of your portal.



Then add the module to an Admin page on your site. The page should be a viable only by administrators.

## Uninstalling

---

1. Login as host to your DotNetNuke portal.
2. Go to Host > Module Definitions
3. Edit the digMeta module by clicking the edit icon.



DigMeta

DigMeta allows you to utilize the MetaWeblog API with your DotNetNuke modules.


4. Click **Uninstall** to uninstall digMeta.

NOTE: This will **NOT** delete the content and images you have uploaded with Windows LiveWriter.

## Setup

---

Install the digMeta module on an some type of admin page. A page which users don't view. You need to be an Admin to edit the digMeta settings.

Meta Connection Name	
	Blog1
	News Articles
	Text/Html mouldes
	Jim's Blog

[New Meta Connection](#)

### ***Creating a Meta Connection***

The number of Meta Connections that you need to create will depend on how the plugin for a particular module is implemented, and how granular you would like to implement the security. For example the DNN Blog plugin requires a meta to be created for each parent blog. The DNN Text/HTML plugin requires one meta to be created to access ALL Text/HTML modules on your site.

## Settings

<b>Product:</b>	<input checked="" type="radio"/> <b>DNN Blog 3.3.1+</b> <input type="radio"/> <b>DNN Text/HTML 4.x</b> <input type="radio"/> <b>Ventrian News 0.5.73+</b>
<b>Connection Name:</b>	<input type="text" value="News Articles"/>
<b>Allowed Roles:</b>	<input checked="" type="checkbox"/> Administrators <input type="checkbox"/> Subscribers <input type="checkbox"/> Registered Users
<b>Allowed Users:</b>	<input type="text" value="Administrator Account"/> <a href="#">Add User</a>
<b>Object Path:</b>	<input type="text" value="/Portals/0/[userid]/[username]/[displayname]"/> <input type="button" value="Check Path"/> Tags: [userid] [username] [displayname] [metaid] [metaname] Sample <i>SuperUser Account</i> path: <b>/Portals/0/1/host/SuperUser Account/3/News Articles/</b> <b>Path OK!</b>

There are some standard settings for each Meta Connection.

### Product

This will vary depending on the plugins that are installed.

### Connection Name

This is the name for your meta. It is used for admin descriptive purposes. It may also be used by a plugin in reporting the “blog” name back to the Windows Live Writer.

### Allowed Roles

The digMeta security is separate from the module security. Allowed Roles are the roles which are allowed to use the meta connection.

### Allowed Users

You can specify which specific users that are allowed to use the meta connection.

## Object Path

You can specify which path in your portal home directory you would like to store the meta files.

 Header:

 Footer:

## Header and Footer

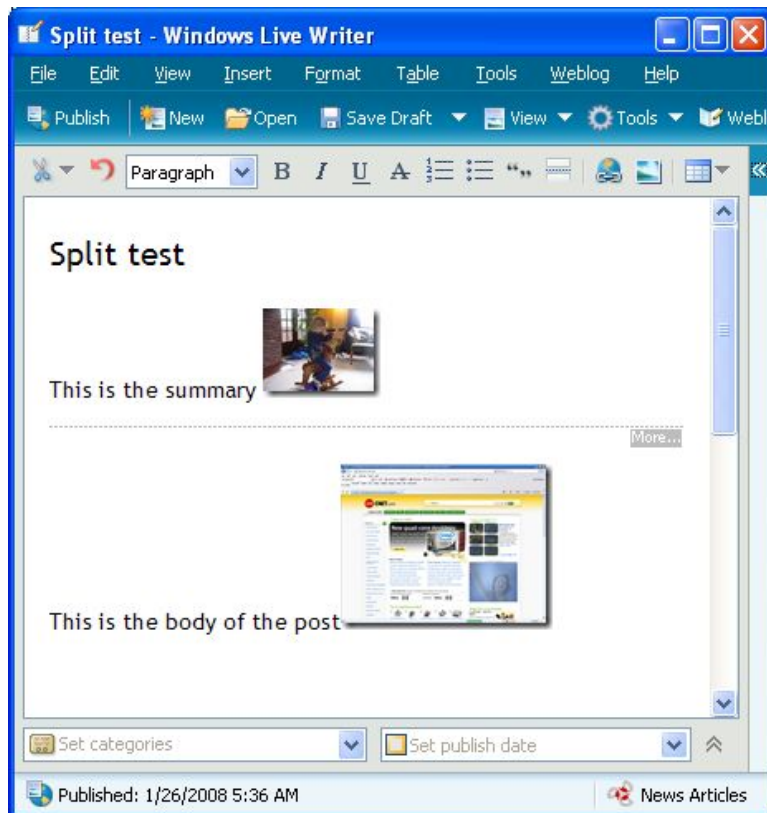
Header and footer are inserted into the body of the post. You can use this to do things like insert adsense ads, LinkThis, or ShareThis scripts.

Windows LiveWriter has no perfect way to handle summaries for your posts. digMeta supports the following methods.

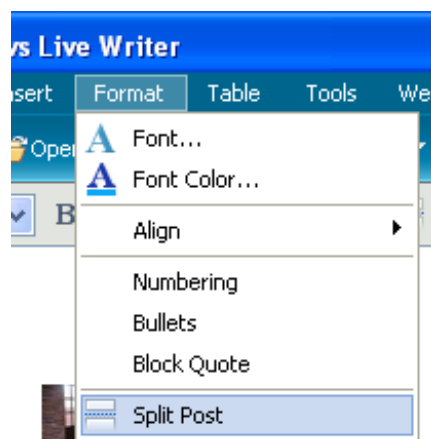
- Use a split post.
- Use the text only Excerpt field
- Extract the first X characters of text from your post.

digMeta will adapt to different ways which a user can send a summary. For example if one users uses a split post, digMeta will use it to create a summary. If another user uses an excerpt, digMeta will use the excerpt. The preferred way is using a split post. Below is an example of a split post in Live Writer.

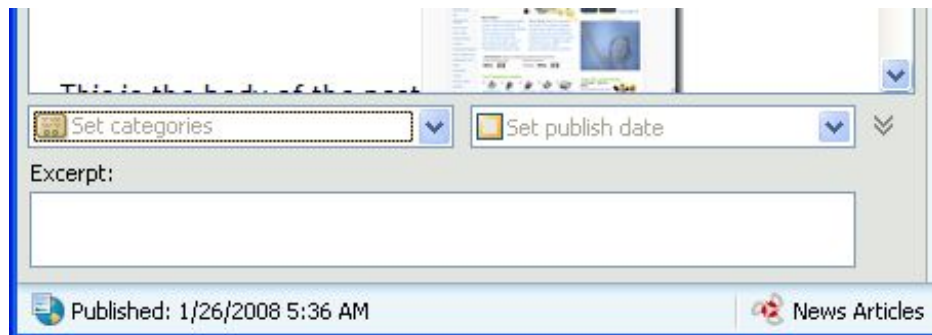




To insert a split post, you need to select Split Post from the Format menu



To use an excerpt, you can enter text in the excerpt field.



If you plugin supports a summary, you should see the following options.

- ☒ **When sending a Post to editor:**
- ☒ Don't send summary
  - ☐ Send summary as excerpt
  - ☐ Send summary in split post
- ☒ **When receiving a Split Post:**
- ☐ Top is summary, bottom is content
  - ☒ Top is summary and beginning of content
- ☒ **Summary Length:**

### When sending a Post to editor

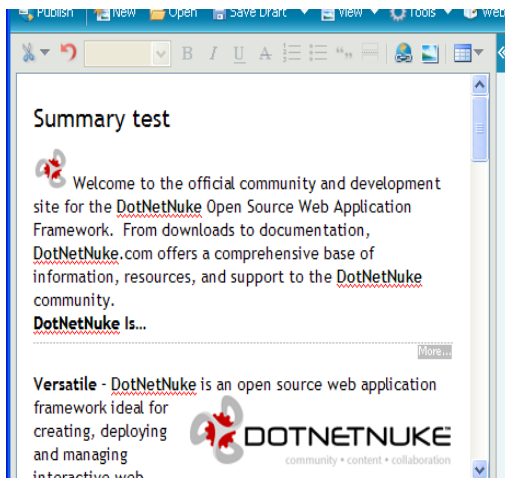
When a user opens a post, this will determine how you want the summary to be sent to the blog editor.

### When receiving a split post

If you choose the first option **Top is summary, bottom is content**. Anything defined above the “more” line will be the summary, anything below will be the content

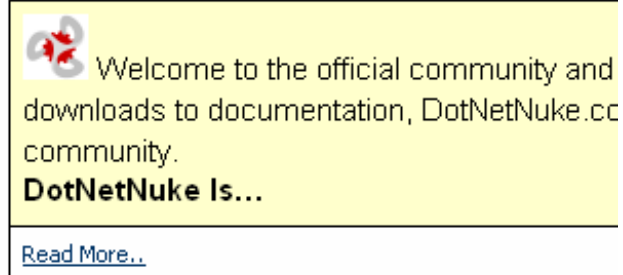
If you choose **Top is summary and beginning of content**, anything above the more line will be used as the summary AND it will also be used as the beginning of the content.

Example: Original Live Writer content with a split post, and the summary which will look the same for either option:

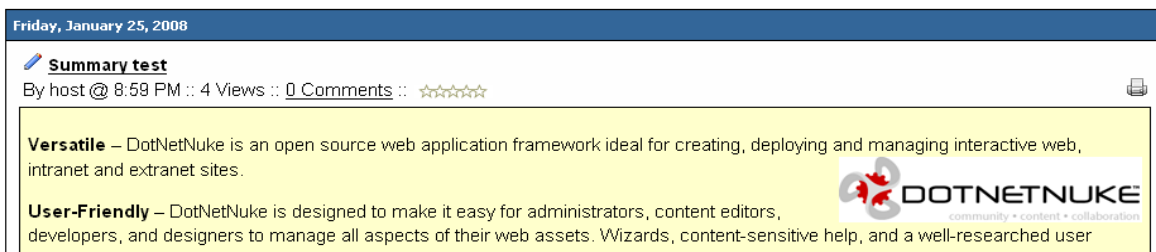


### **Summary test**

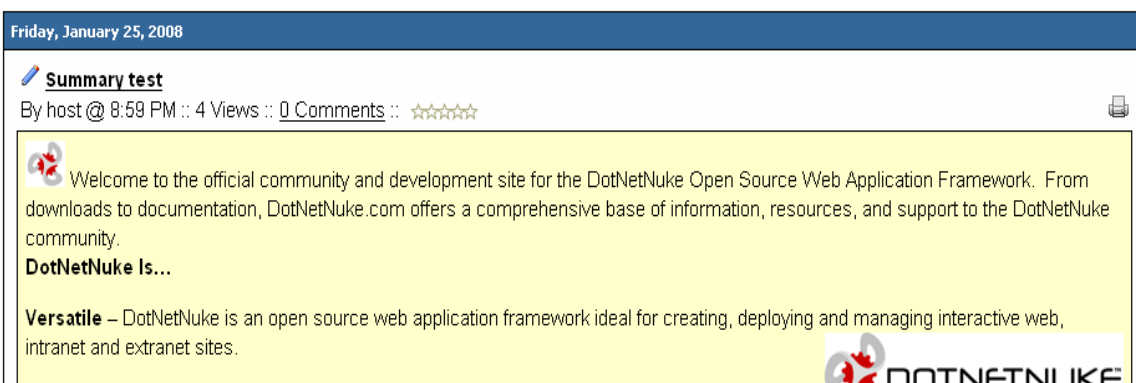
By host @ 8:59 PM :: 3 Views :: 0 Comments



Top is summary, and bottom is content. The summary text is **not included in the post**.



Top is summary and beginning of content



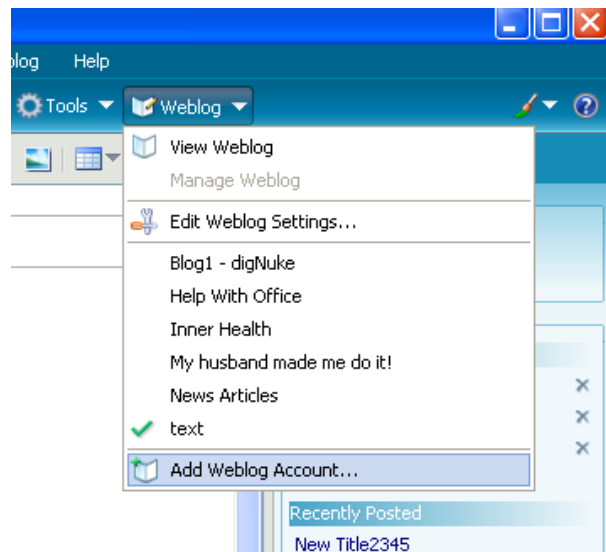
## ***Options***

The Options section will change depending on the plug in. For the standard plug ins included in digMeta, please visit [dignuke.com](http://dignuke.com) for setup details.

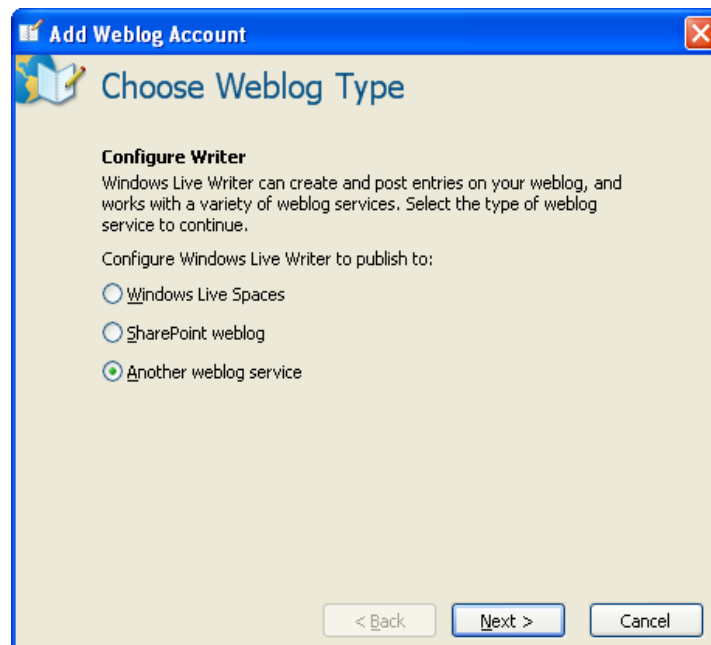
## Setting up Windows Live Writer

You can download Windows Live Writer from <http://get.live.com/writer/overview>

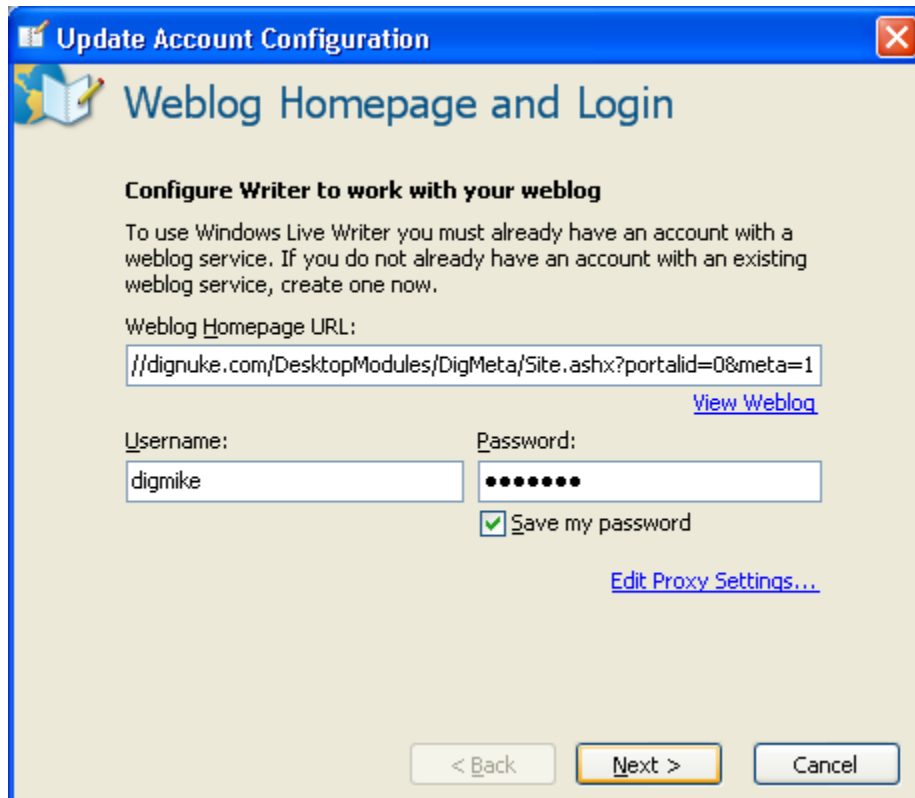
**First step**, you need to Add a new weblog account.



Next choose the weblog type of **Another Weblog Service**



Now enter the homepage information from the digMeta admin screen.. If you set this the the actual url of your blog, Windows Live Writer will reset it back to the home url. For username and password, use your DotNetNuke username and password.



**Update Account Configuration**

### Weblog Homepage and Login

**Configure Writer to work with your weblog**

To use Windows Live Writer you must already have an account with a weblog service. If you do not already have an account with an existing weblog service, create one now.

Weblog Homepage URL:

[View Weblog](#)

Username:

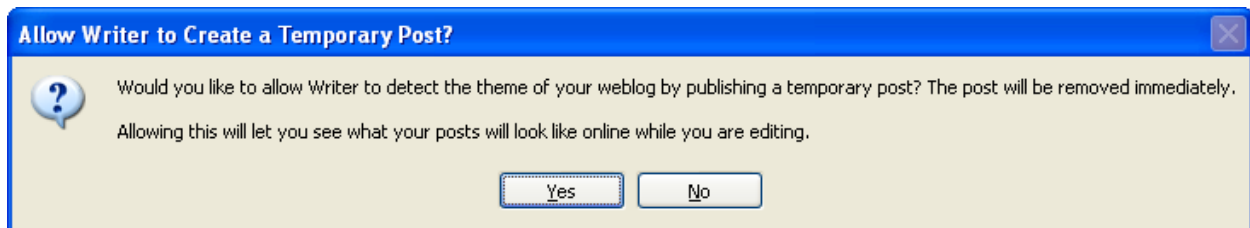
Password:

☒ Save my password

[Edit Proxy Settings...](#)

< Back   Next >   Cancel

Live Writer will then prompt you with the following. Select **Yes**.



## You are Done!

Don't forget to visit <http://gallery.live.com/default.aspx?pl=8> to see all the plug ins available to use in LiveWriter.

## Support

---

Forums: [www.dignuke.com](http://www.dignuke.com)

Email: [support@dignuke.com](mailto:support@dignuke.com)





# End User License Agreement

---

## Software License Agreement for DIGMETA

IMPORTANT- PLEASE READ CAREFULLY: BY INSTALLING THE SOFTWARE (AS DEFINED BELOW), COPYING THE SOFTWARE AND/OR CLICKING ON THE 'ACCEPT' BUTTON BELOW, YOU (EITHER ON BEHALF OF YOURSELF AS AN INDIVIDUAL OR ON BEHALF OF AN ENTITY AS ITS AUTHORIZED REPRESENTATIVE) AGREE TO ALL OF THE TERMS OF THIS END USER LICENSE AGREEMENT ('AGREEMENT') REGARDING YOUR USE OF THE SOFTWARE. IF YOU DO NOT AGREE WITH ALL OF THE TERMS OF THIS AGREEMENT, CLICK ON THE 'NO' BUTTON. THIS WILL CANCEL THE INSTALLATION.

1. GRANT OF LICENSE: Subject to the terms below, DIGNUKE hereby grants you a non-exclusive, non-transferable license to install and to use DIGMETA ('Software').

Under this license, you may: (i) install and use the Software on a single DotNetNuke installation for your use (ii) copy the Software for back-up or archival purposes. (iii) You may not distribute the software to others without first obtaining the required licenses, where applicable. (iii) install and use the Software on a single test DotNetNuke installation, not public or viewable by other users.

Whether you are licensing the Software as an individual or on behalf of an entity, you may not: (i) reverse engineer, decompile, or disassemble the Software or attempt to discover the source code; (ii) modify, or create derivative works based upon, the Software in whole or in part without the express written consent of DIGNUKE; (iii) distribute copies of the Software; (iv) remove any proprietary notices or labels on the Software; (v) resell, lease, rent, transfer, sublicense, or otherwise transfer rights to the Software.

2. DIGMETA: You acknowledge that no title to the intellectual property in the Software is transferred to you. Title, ownership, rights, and intellectual property rights in and to the Software shall remain that of DIGNUKE. The Software is protected by copyright and patent laws of the United States and international treaties.

### 3. DISCLAIMER OF WARRANTY:

YOU AGREE THAT DIGNUKE HAS MADE NO EXPRESS WARRANTIES, ORAL OR WRITTEN, TO YOU REGARDING THE PRODUCTS AND THAT THE PRODUCTS ARE BEING PROVIDED TO YOU 'AS IS' WITHOUT WARRANTY OF ANY KIND. DIGNUKE DISCLAIMS ANY AND ALL OTHER WARRANTIES, WHETHER EXPRESSED, IMPLIED, OR STATUTORY. YOUR RIGHTS MAY VARY DEPENDING ON THE STATE IN WHICH YOU LIVE.

DIGNUKE SHALL NOT BE LIABLE FOR INDIRECT, INCIDENTAL, SPECIAL, COVER, RELIANCE, OR CONSEQUENTIAL DAMAGES RESULTING FROM THE USE OF THIS PRODUCT.

4. LIMITATION OF LIABILITY: You use this program solely at your own risk.

IN NO EVENT SHALL DIGNUKE BE LIABLE TO YOU FOR ANY DAMAGES, INCLUDING BUT NOT LIMITED TO ANY LOSS, OR OTHER INCIDENTAL, INDIRECT OR CONSEQUENTIAL DAMAGES OF ANY KIND ARISING OUT OF THE USE OF THE SOFTWARE, EVEN IF DIGNUKE HAS BEEN ADVISED OF THE POSSIBILITY OF SUCH DAMAGES. IN NO EVENT WILL DIGNUKE BE LIABLE FOR ANY CLAIM, WHETHER IN CONTRACT, TORT, OR ANY OTHER THEORY OF LIABILITY, EXCEED THE COST OF THE SOFTWARE. THIS LIMITATION SHALL APPLY TO CLAIMS OF PERSONAL INJURY TO THE EXTENT PERMITTED BY LAW.

5. TERMINATION: This Agreement shall terminate automatically if you fail to comply with the limitations described in this Agreement. No notice shall be required to effectuate such termination. Upon termination, you must remove and destroy all copies of the Software.

6. MISCELLANEOUS:



**Severability.**

In the event of invalidity of any provision of this Agreement, the parties agree that such invalidity shall not affect the validity of the remaining portions of this Agreement.

**Export.**

You agree that you will not export or re-export the Software outside of the jurisdiction in which you obtained it without the appropriate United States or foreign government licenses.

**Governing Law.**

This EULA will be governed by Pennsylvania law and the United States of America, without regard to its choice of law principles. The United Nations Convention for the International Sale of Goods shall not apply.

**Entire Agreement.**

You agree that this is the entire agreement between you and DIGNUKE, which supersedes any prior agreement, whether written or oral, and all other communications between DIGNUKE and you relating to the subject matter of this Agreement.

**Reservation of rights.**

All rights not expressly granted in this Agreement are reserved by DIGNUKE.

**Contact Information**

If you have any questions about this EULA, or if you want to contact DIGNUKE for any reason, please direct all correspondence to: DIGNUKE, PO BOX 891, Ellwood City, PA 16117, United States of America or email [info@dignuke.com](mailto:info@dignuke.com).